

一种危害鹅掌楸的新叶蜂

萧刚柔

摘要 本文记述了中国叶蜂一新种——鹅掌楸叶蜂(*Megabeleses liriöendrovorax*), 并附有形态特征图。

关键词 膜翅目、广腰亚目、叶蜂科、粗角叶蜂亚科

本文记述中国叶蜂一新种。本新种是危害鹅掌楸[*Liriöendron chinense* (Hemsl.) Sarg.] 的重要害虫。模式标本保存于中国林业科学研究院林业研究所森林昆虫标本馆内。

鹅掌楸叶蜂 *Megabeleses liriöendrovorax* 新种

雌虫 身体粗大; 头部黑色, 具光泽; 须褐黑色; 触角黑色。胸部黑色, 具光泽; 淡膜叶褐黑色; 翅透明, 前端带淡烟褐色; 翅脉及翅痣黑色; 足黑色; 前足及中足胫节、跗节白褐色; 后足基节及第1转节背面具白色部分。腹部黑色, 具天蓝色光泽; 腹部背板1侧缘大部分白色; 锯鞘黑色。唇基前缘微凹入; 中窝圆形, 深; 额脊及触角沟明显; 单眼后区隆起; 冠缝、侧缝明显; OOL:POL:OCL = 2.9:1:1.4; 单眼后区长:宽 = 1.3:1。体长10~11 mm。触角9节; 第3节长:第4+5节长 = 1:1.7。头部刻点细密; 唇基及额脊刻点呈皱纹状。胸部背板刻点细, 中等稀疏; 侧板刻点粗密, 呈皱纹状。腹部背板1刻点粗密, 呈皱纹状; 其余背板刻点较细疏。锯鞘突出腹末, 锯末端突出锯鞘(图1); 锯腹片见图2。身体细毛淡黄色; 翅膜上具许多黑色短刚毛。

雄虫 触角刚毛较长; 后足基节及第1转节背面及腹部背板/两侧无白色部分; 头、胸、

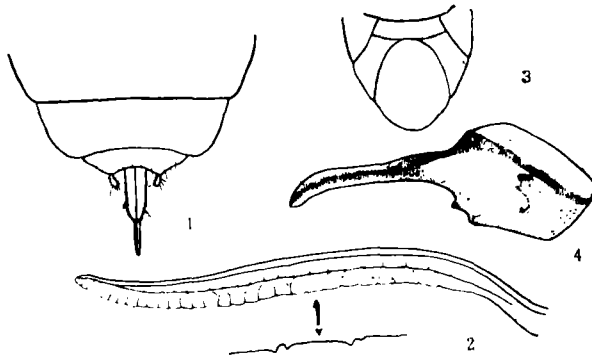


图1~4 鹅掌楸叶蜂: 1. ♀腹末背面观, 2. 锯腹片及齿节腹缘, 3. ♂下生殖板, 4. 阴茎瓣

1992-04-20收稿。

萧刚柔研究员(中国林业科学研究院林业研究所 北京 100091)。

腹刻点较粗密。OOL:POL:OCL=2.9:1:2.4; 单眼后区长:第4+5节长=1:1.9。下生殖板前端圆形(图3)。阳茎瓣见图4。其余色泽及结构同雌虫。

变异 个别雌虫后足胫节背面有白斑; 个别雄虫后足基节及第1转节背面有白色部分。

寄主 鹅掌楸 *Liriodendron chinense* (Hemsl.) Sarg.

正模♀, 江西省铜鼓县, 1988-05-01, 欧阳贵明、杨笑萍采集。配模♂, 同正模。副模4♀♀、4♂♂, 同正模。

本新种与 *Megabeleses crassitarsis* Takeuchi 很相似, 但本新种中胸后背片黑色, 淡膜叶褐黑色; 后腿节基部黑色; 腹部背板/两侧各有一白色部分; 雌虫中胸小盾片无中纵脊; 雄虫腹部长胜过头部加胸部之长。

参 考 文 献

- 1 Benson R B. Handbooks for the identification of British insects, 1952, VII (part 2(b)), 78~109.
- 2 Takeuchi K. A generic classification of the Japanese Tenthredinidae (Hymenoptera, Symphyta). Kyoto, 1952, 90.

A New Species of the Genus Megabeleses from China (Hymenoptera, Tenthredinidae)

Xiao Gangrou

Abstract In the present paper a new species of sawflies from China is described, which is an important destructive forest insect pest of *Liriodendron chinense* (Hemsl.) Sarg. The type specimens are kept in the collection of forest insects in the Research Institute of Forestry, CAF. *Megabeleses liriodendrovorax* n. sp.

Female: Robust; head black, shining; palpi brownish black; antennae black. Thorax black, shining; cenchri brownish black; wing hyaline, apex slightly infuscated; vein and stigma black; legs black; front and middle tibiae and tarsi whitish brown; back of coxae and first trochanters of hind leg with white spots. Abdomen black with bluish lustre; most of lateral sides of abdominal tergum white; sawsheath black. Anterior margin of clypeus slightly emarginate; middle fovea round, deep; frontal carina and antennal furrows well defined; postocellar area convex; coronal sutures and lateral sutures distinct; OOL:POL:OCL=2.9:1:1.4; length of postocellar area:width=1.3:1. Body length 10~11 mm. Antennae with 9 segments; length of third antennal segment: total length of fourth and fifth antennal segments=1:1.7. Punctures of head fine and dense; clypeus and frontal

ridges rugosely punctate; punctures of thoracic nota fine and moderately dense; thoracic pleura with coarse and dense punctures forming reticulate pattern; punctures of first abdominal tergum coarse and dense; remaining terga with rather fine and sparse punctures. Sawsheath projecting beyond abdominal apex and apex of saw projecting beyond sawsheath; lancet as in fig. 2. Body with pale yellowish pubescence; wing membrane with numerous black short hairs.

Male: Hairs of antennae much longer; hind coxae and first trochanters of hind leg and most of lateral sides of first abdominal tergum white. Punctures of head, thorax, and abdomen rather coarse and dense; OOL:POL:OCL=2.9:1:2.4; length of postocellar area:width=1.4:1. Body length 9~10 mm; length of third antennal segments:length of fourth plus fifth antennal segments=1:1.9. Subgenital plate round (fig. 3). Penis valve as in fig. 4. Remainder of coloration and structure as in female.

Variability: Individual female specimen with white spots on the back of hind tibiae; individual male specimen with white spots on back of hind coxae and on first trochanters of hind legs.

Host plant: *Liriodendron chinense* (Hemsl.) Sarg.

Holotype ♀; Tonggu County, Jiangxi Province; May 1, 1988; Ou Yang Guiming, Yang Xiaoping leg. Allotype ♂; same data as for holotype. Paratypes 4 ♀ ♀, 4 ♂ ♂; same data as for holotype.

The new species is closely allied to *Megabeleses crassitarsis* Takeuchi, but differs from the latter in the following characters: posttergite black; cenchri brownish black; base of hind femora black; lateral sides of first abdominal tergum with white parts; mesoscutellum of the female without longitudinal median carina; male abdomen longer than the head and thorax.

Key words Hymenoptera, Symphyta, Tenthredinidae, Allantinae