

丝角叶蜂属一新种(膜翅目:叶蜂科)

萧刚柔

摘要 本文记述叶蜂科、丝角叶蜂亚科一新种——杏丝角叶蜂 *Nematus prunivorus*。本种在浙江省淳安县严重危害杏树。

关键词 膜翅目、叶蜂科、丝角叶蜂亚科、丝角叶蜂属、叶蜂

杏丝角叶蜂 *Nematus prunivorus* 新种^[1,2]

雌虫:黑色,具紫蓝色光泽。触角黑色或黑褐色;须黑褐色;上颚黑色,齿黑红色;唇基两侧及唇基上区中央有淡色部分。淡膜叶深黄色;翅透明,前端淡烟色;翅痣黑色,基部有时具一不明显的黄斑;前缘脉、臀脉基部黑黄色;其余翅脉黑色;足黑色,基节尖端、转节、腿节基端、胫节基端黄白色,跗节黑褐色或黑色。头、胸部细毛黄褐色。

唇基前缘凹入很深,几呈弧形;额脊明显;中窝圆、小而浅;侧缝深;横缝及冠缝明显;OOL:POL:OCL=1.1:1.0:1.1;触角长约为头宽的 $2\frac{2}{3}$ 倍;眼后头部加宽;唇基及上唇细毛长而密。锯腹片见图1-1。

头部刻点细稀;中胸背板除小盾片刻点细密;中胸前侧片刻点很细而稀,刻点间距为刻点直径1~2倍;腹部背板无刻点,有呈斜状分布的刻纹。

体长10mm,触角各节相对长=1.7:1.0:7.9:8.1:7.8:5.9:5.8:5.2:5.3。

雄虫:体色同雌虫,前、中跗节色稍淡;翅痣基部黄斑有时较明显;OOL:POL:OCL=1.6:1.0:1.7;触角长约为头宽的 $2\frac{1}{3}$ 倍;眼后头部不加宽;阳茎瓣见图1-2。头部、中胸前盾片、中胸前侧片刻点粗密,呈皱纹状;腹部背板4~8刻点粗密。

体长9mm;触角各节相对长=1.5:1.0:5.6:5.9:5.8:4.8:4.5:4.2:4.5。其余特征同雌虫。

正模♀,浙江省淳安县,1994·IV·15,赵锦年采;配模♂,记载同正模;副模1♂、4♀♀,记载同正模;3♀♀,地点及采集者同正模,1990·V·18。

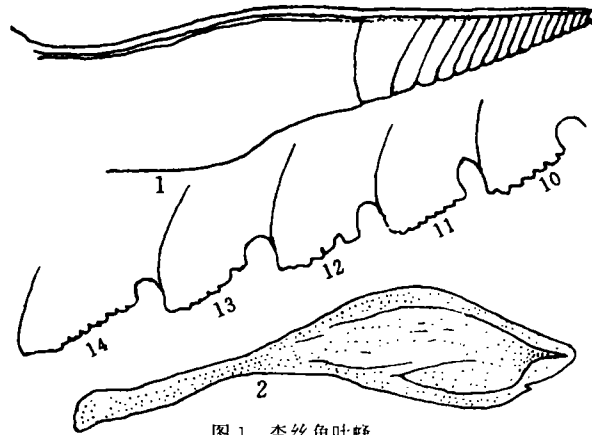


图1 杏丝角叶蜂
1. 锯腹片及10~14节锯齿放大;2. 阳茎瓣

1994-11-28 收稿。

萧刚柔研究员(中国林业科学研究院森林保护研究所 北京 100091)。

寄主:杏 *Prunus armeniaca* L.

本新种与 *Nematus caeruleocarpus* Hartig 相似,但本种翅、足颜色及锯腹片和阳茎瓣构造特征均与后者有异,可与之相区别。

模式标本保存于中国林业科学研究院森林保护所昆虫标本室。

参 考 文 献

- 1 Benson R B. Hymenoptera, Symphyta. Section(c). Handbook for the identification of British insects. R. ent. Soc. Lond., 1958, 6(2c): 139~252+6.
- 2 Zhelochovtsev A N. Suborder: Symphyta(Chalastogastra). in: Medvedev G S (ed.). The key to insects of European USSR. Vol. 3. Hymenoptera, 6 th part. Nauka, Leningrad, USSR, 1988. 7~234.

A New Species of the Genus *Nematus* (Hymenoptera: Tenthredinidae) from China

Xiao Gangrou

Abstract This paper reports a new species of the genus *Nematus*—*N. prunivorous* Xiao from China. It is injurious to *Prunus armeniaca* L. in Chunan County, Zhejiang Province.

Female: Black with purplish blue lustre. Antennae black or blackish brown; mandible black with blackish red teeth; lateral sides and center of supraclypeal area each with a pale part. Cenchri deep yellow; wing hyaline with apical part slightly infuscated; stigma black sometimes with a obsolete yellow spot on basal part; costa, basal part of anal vein blackish yellow; other veins black; leg black with apices of coxae, trochanters, basal parts of femora and tibiae yellowish white; tarsi blackish brown or black. Pubescence on head and thorax yellowish brown.

Anterior margin of clypeus deeply imarginated, nearly arcuate; frontal carina distinct; median fovea round, small and shallow; lateral sutures deep; transverse and coronal sutures distinct; OOL : POL : OCL = 1.1 : 1.0 : 1.1; antennal length about $2\frac{2}{3}$ times head width; head behind eye in dorsal view widened; Pubescence on clypeus and labrum long and dense. Lancet see fig. 1-1.

Head finely and sparsely punctate; mesonotum except for scutellum with fine and dense punctures; mesepisternum with very fine and sparse punctures, interspace between punctures 1~2 times diameter of puncture; abdomen without punctures but with obliquely distributed sculptures.

Body length 10 mm; relative lengths of antennal segments = 1.7 : 1.0 : 7.9 : 8.1 : 7.8 : 5.9 : 5.8 : 5.2 : 5.3.

Male: Color similar to female, but fore and median tibiae paler and yellow spot on basal part of stigma sometimes more distinct; OOL : POL : OCL = 1.6 : 1.0 : 1.7; antennal length about $2\frac{1}{3}$ times head width; head behind eye in dorsal view not widened; Penis valve see fig. 1-2. Pubescence on head, mesoscutum, mesepisternum coarse and dense, rugose; abdominal terga 4~8 with coarse punctures.

Body length 9 mm; relative length of antennal segments = 1.5 : 1.0 : 5.6 : 5.9 : 5.8 : 4.8 : 4.5 : 4.2 : 4.5. Other characters as for the female.

Holotype ♀, Chunan County, Zhejiang Province, 15. IV. 1994, Zhao Jinnian leg. Allotype ♂, same data as for holotype. Paratypes 1 ♂, 4 ♀♀, same as holotype; 3 ♀♀ same locality and collector as holotype, 18. V. 1990.

Host: *Prunus armeniaca* L.

The new species resembles *Nematus caeruleocarpus* Hartig, but differs from the latter in the color of wings and legs and the structural features of the lancet and penis valve.

The type specimens are kept in the insect collection of the Institute of Forest Protection, the Chinese Academy of Forestry.

Key words Hymenoptera, Tenthredinidae, Nematinae, *Nematus*, Sawfly *Nematus prunivorous* n. sp.